

Scientek™

Hospital and Laboratory Equipment

CAGE & RACK WASHER



SW 6000 Series

With a design life in excess of thirty years the purchase of a floor loading cabinet washer is an important decision. **With the washer experience at Scientek we would like to make this an easy task.**

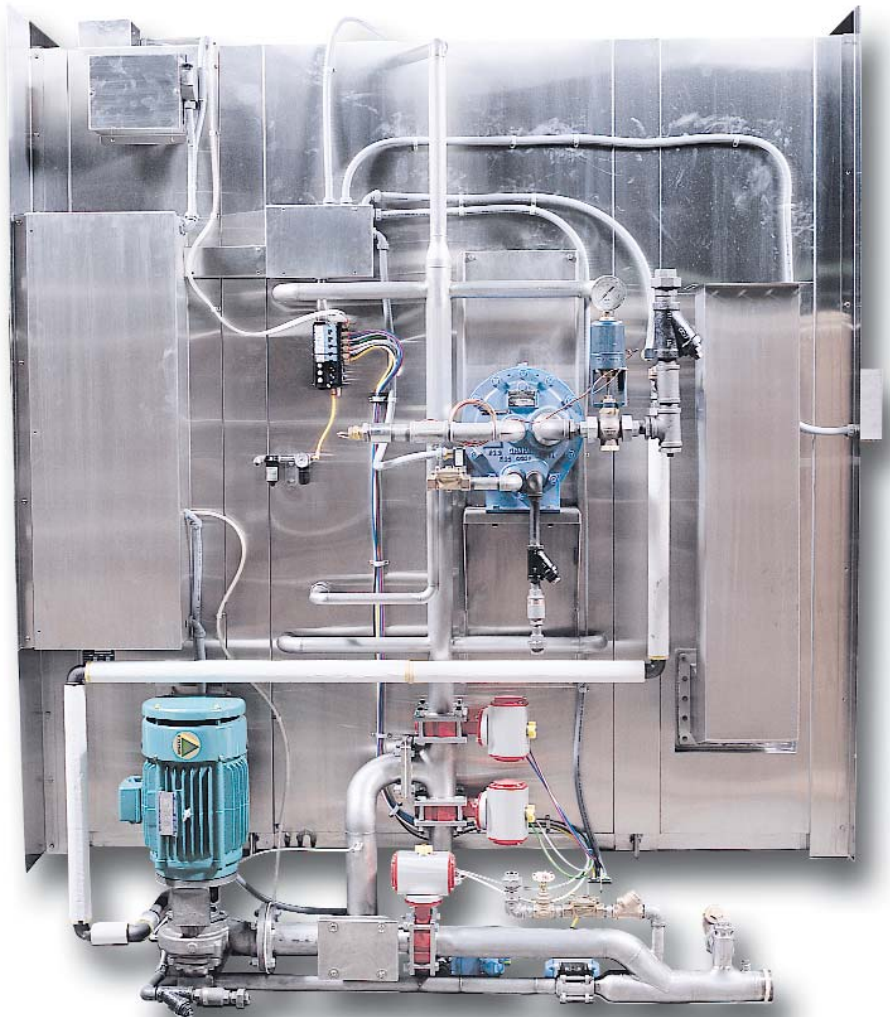
Scientek's SW6000 Series washers are such an obvious choice, with its simple design. We've taken the best and made them better!

- **The SW6000 Series Cage and Rack Washers from Scientek have a simple well proven engineered washer design.**
- **The powerful and effective rotating spray washing arms, together with the versatile cycle programming, make this the winning washing combination.**



Scientek's exceptional features include:

- Internal safety pull cable - emergency stop
- Friction release - safety door hardware
- Sanitary gaskets and bolted construction for ease of installation and egress
- Custom chamber sizes to suit load
- Direct quick cart washing spray option
- Non-proprietary parts
- Built-in steam hot water booster
- Self-cleaning inline debris strainer
- Guaranteed 180°F final rinse process
- Two door front and rear controls



- Proven effective overlap rotary spray washing
- Powerful impinging water pressure sprays ware clean
- Versatile aqua-pulse washing system supplies maximum water to required side



- Simple touch controls
- Full display cycle status and diagnostics
- Pre-programmed 10 cycle selection
- Colour screen control interface
- Event, time and temperature displayed
- Modem connection for factory upgrades

SW6000 CAGE & RACK WASHER SERIES

**Table of washer cabinet models for the size you need.
Customized widths, heights and lengths are our specialty.**

MODEL #	INTERIOR CABINET SIZE	EXTERIOR CABINET SIZE	PUMP MOTOR
SW 6200	41" W x 84" H x 80" L 1042mm x 2134mm x 2032mm	55 1/2" W x 91" H x 84" L 1410mm x 2311mm x 2134mm	7.5 Hp
SW 6300	48" W x 88" H x 90" L 1219mm x 2235mm x 2286mm	62 3/4" W x 95" H x 96" L 1594mm x 2413mm x 2438mm	10 HP
SW 6700	48" W x 88" H x 128" L 1219mm x 2235mm x 3251mm	62 3/4" W x 95" H x 132" L 1594mm x 2413mm x 3353mm	15 Hp
SW 6700/W	68 1/2" W x 88" H x 128" L 1740mm x 2235mm x 3251mm	83 1/4" W x 95" H x 132" L 2115mm x 2413mm x 3353mm	20 Hp
SW 6900	48" W x 88" H x 188" L 1219mm x 2235mm x 4775mm	62 3/4" W x 95" H x 192" L 1594mm x 2413mm x 4877mm	20 Hp

- **All heights measured above floor level.**
- **Scientek will provide mechanical service and installation drawings on request.**
- **Please consult factory for further details on how we can help you.**

Optional rack washer features & accessories allow for personal customization:

- **Custom interior chamber sizes**
- **Low profile base (no pit)**
- **Electric heating in place of standard steam heating**
- **Automatic cold water drain discharge cooling**
- **120 degree F temperature rise to process supply water**
- **80 GPM high volume H.W. fill rate**
- **Recessed wall or barrier isolation**
- **Cycle data printer**
- **Data system reporting**
- **Direct quick connect cart washing**
- **Micro-isolation rack watering flush system**
- **Chemical dispensing and monitoring system**
- **Devapourmatic system - self contained (no exterior exhaust)**
- **Tilt floor or tilt ramp**
- **QLCT-6 - Flat deck washing system**
- **SMR-63 - Cage Washing System**
- **UC-6000 - General purpose wash cart**
- **QLSP-6 - Bottle washing spindle cart**

For additional product information please contact the factory or the Scientek representative in your area.

ScientekTM
Hospital and Laboratory Equipment

**11151 Bridgeport Road
Richmond, BC, Canada V6X 1T3
Tel: (604) 273-9094
Fax: (604) 273-1262
E-mail: sales@scientek.net
www.scientek.net**